

# Changing settings in the BlueSolar MPPT Charge Controllers

## DEPRECATED: Use VictronConnect instead of mpptprefs

We recommend to use VictronConnect instead of mpptprefs. Much simpler and faster to use. Also it includes automatic firmware updates. More information in the [VictronConnect manual](#).

## Original text

Products:

- BlueSolar Charge controller MPPT 70/15 (replaced with the 75/15)
- BlueSolar Charge controller MPPT 75/10
- BlueSolar Charge controller MPPT 75/15
- BlueSolar Charge controller MPPT 75/50
- BlueSolar Charge controller MPPT 100/15
- BlueSolar Charge controller MPPT 100/30
- BlueSolar Charge controller MPPT 100/50
- BlueSolar Charge controller MPPT 150/35
- BlueSolar Charge controller MPPT 150/45 (Tr/MC-4)
- BlueSolar Charge controller MPPT 150/60 (Tr/MC-4)
- BlueSolar Charge controller MPPT 150/70 (Tr/MC-4)
- BlueSolar Charge controller MPPT 150/85 (Tr/MC-4)
- BlueSolar Charge controller MPPT 150/100 (Tr/MC-4)

## Instructions

- Download mpptprefs.exe here:  
<https://www.victronenergy.com/support-and-downloads/software#mpptprefs>
- In case the VE.Direct to USB cable is not recognized on your system you may need to download the driver from the [VE Power Setup section on our Software page](#).

## VE.Direct connection

- Connect the VE.Direct to USB cable to the BlueSolar MPPT Charge Controller as shown below.

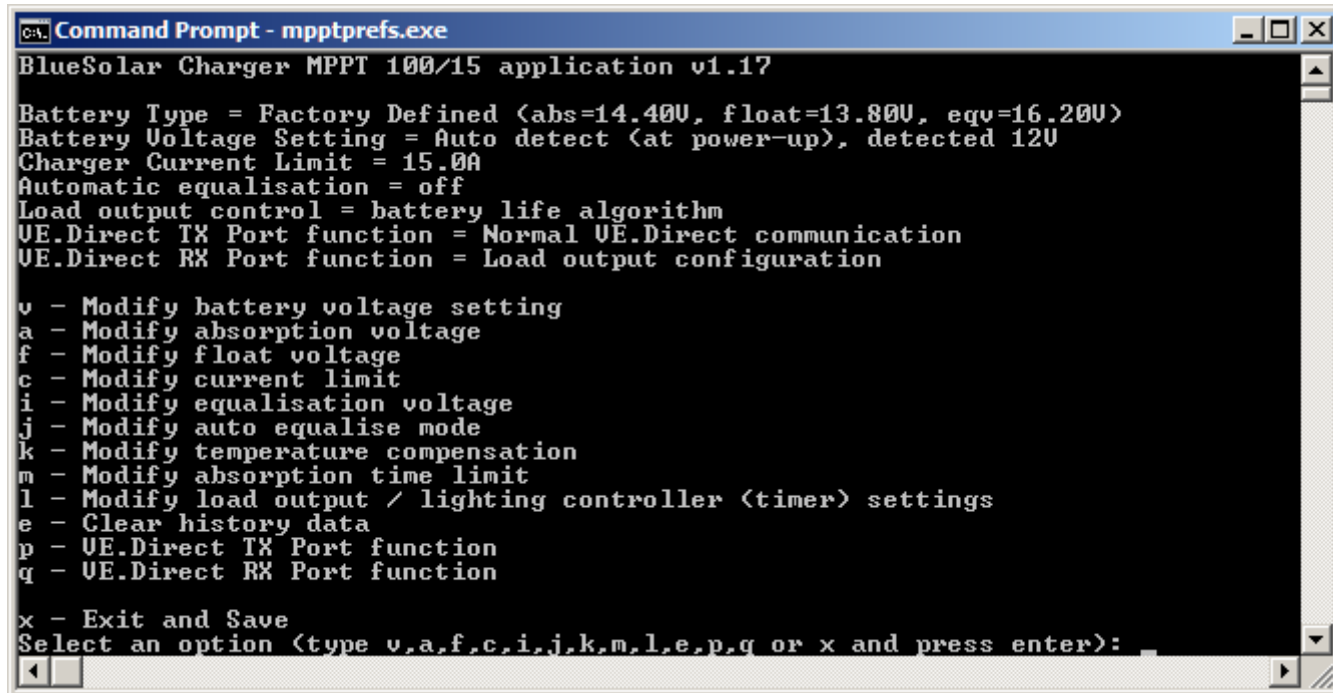
- Connect the other end to a Windows PC.
- Power-up the charger. Note that the MPPT 70/15, 75/10, 75/15 and 100/15 can be powered from either the battery terminals or the solar panel terminals. The other models can only be powered from the solar panel terminals.



After successfully connecting the charger to the computer, there are two ways to change the settings. The common way is the interactive mode. When a large number of chargers must be (re)programmed, it might be useful to use the tool in batch mode. Both modes are explained:

## Interactive mode

- Start the mpptprefs.exe tool by double-clicking on it. The tool will try to locate the MPPT charger by scanning the available ports and downloading the settings once it finds a compatible charger. First you will see an overview of charger model, firmware version and the actual settings, similar to that shown below (MPPT 100/15 model used in this instance):



- When the settings are to your liking, make sure to press x and enter to save them to the connected charger.

## Charge algorithm

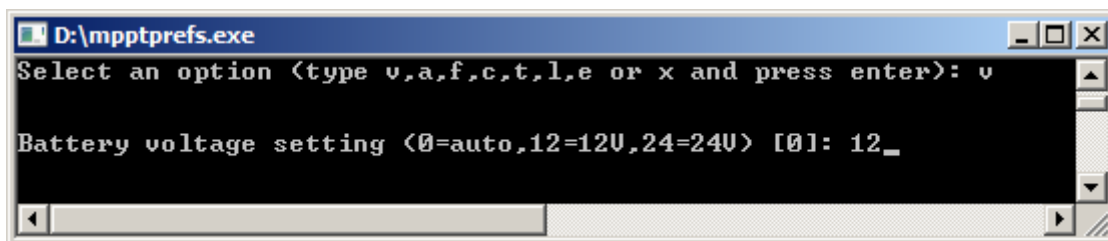
The menu allows you to change the following settings

### v - Modify battery voltage setting

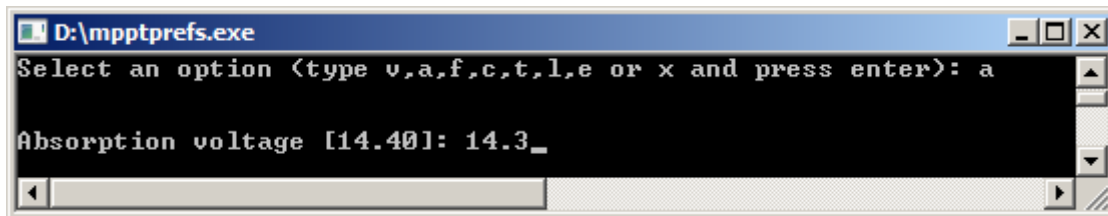
Set the battery voltage to auto detection (0) or a fixed voltage (12, 24, 36, 48) to disable the auto detection.

Notes:

- 36 and 48 volts are only available on models that support these voltages, such as the MPPT 150/35. 36 volts cannot be detected automatically. For systems that require this voltage, it must always be set manually.
- Always fix the battery voltage when connecting the MPPT behind a Cyrix-Li-charge relay.



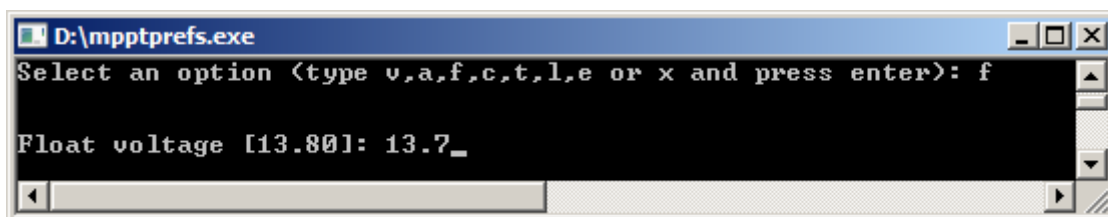
### a - Modify absorption voltage



**b** - Enable/disable battery safe mode

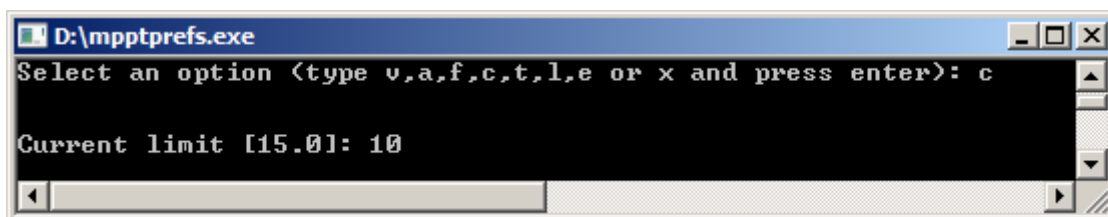
Switch on or off the battery safe mode, please note that battery safe mode has been removed as of version 1.13. If you connect a model with recent firmware, this option will no longer be shown.

**f** - Modify float voltage



**c** - Modify current limit

Allows you to set a lower maximum charge current.



**i** - Modify equalisation voltage

Available from firmware 1.16 and higher.

**j** - Modify auto equalise mode

Set-up auto equalise mode, available options:

- 0 = off
- 1 = daily
- 2 = every other day
- ...
- 250 = every 250 days

When Automatic equalization is active, the absorption charge will be followed by a voltage limited constant current period. The current is limited to 8% of the bulk current for all VRLA (Gel or AGM) batteries and some flooded batteries, and to 25% of the bulk current for all tubular plate batteries. The bulk current is the rated charger current unless a lower maximum current setting has been chosen (option 'c'). In case of all VRLA batteries and some flooded batteries (algorithm number 0, 1, 2 or 3) automatic equalization ends when the voltage limit maxV has been reached, or after  $t = (\text{absorption time})/8$ , whichever comes first. For all tubular plate batteries automatic equalization ends after  $t = (\text{absorption time})/2$ .

Available from firmware 1.16 and higher.

### **k** - Modify temperature compensation

Set-up temperature compensation. Allowed range -21mV/K .. 21mV/K, use value 0 to disable the temperature compensation (e.g. for Lithium batteries). Please note that the temperature compensation is not dynamic during operation. The charger uses its internal temperature for the battery temperature compensation when the charger has been idle for at least one hour, i.e. when the charger is not actively charging a battery or supplying a load.

### **m** - Modify absorption time limit

Set-up the absorption time limit. Enter the time value in the notation hh:mm, where hh=hours (0..12), mm=minutes (00..59).

The maximum duration of the absorption period is determined by the battery voltage measured just before the solar charger starts up in the morning:

Battery voltage Vb (@start-up)	Multiplier	Maximum absorption times
Vb < 11.9V	x 1	06:00 hours
11.9V < Vb < 12.2V	x 2/3	04:00 hours
12.2V < Vb < 12.6V	x 1/3	02:00 hours
Vb > 12.6V	x 1/6	01:00 hours

### **t** - Switch back to the factory defined battery table / rotary switch position

Modifying any of the charge parameters (a, b, f and c) automatically creates a user defined battery type. Use this option to switch back to the factory defined algorithm.



Note for models with a rotary switch: creating a user defined battery effectively disables the rotary switch. Use option 't' to enable the rotary switch again, and make the charge use the battery type as selected by the rotary switch position. Firmware version 1.15 has an improvement, changing the setting of the rotary switch will automatically enable it again.

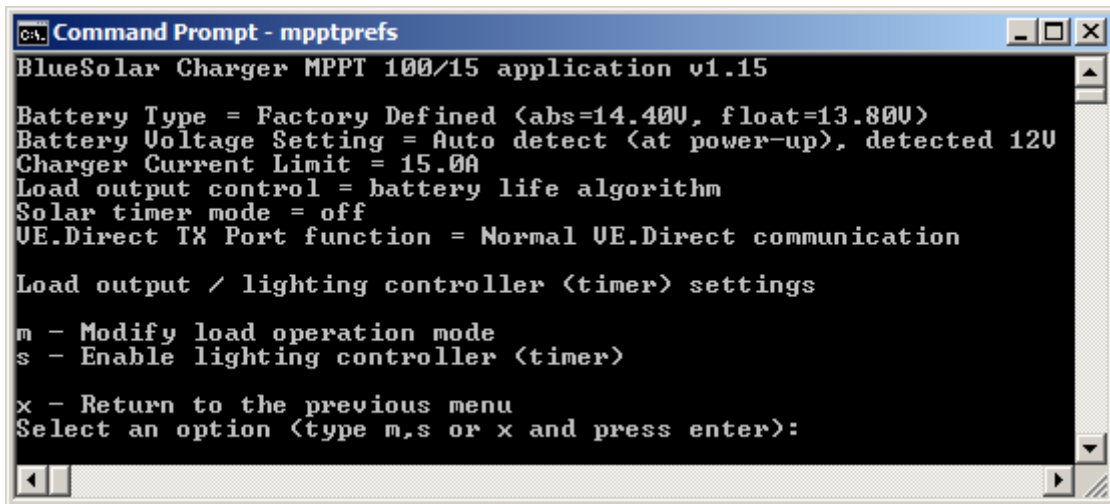
## **Load output and lighting controller**

These options are only available on charger models with a load output. These are the MPPT 70/15, MPPT 75/10, MPPT 75/15 and MPPT 100/15. This option shows a sub-menu where the load operation mode can be changed (option m).

The lighting controller (timer) functionality is available from firmware version 1.15 and higher and the relevant options will only be shown when a charger with the correct firmware is detected. An MPPT 70/15 needs to be from year/week 1308 or later. Earlier 70/15s are not suitable for the lighting controller, upgrading MPPT firmware will not help. To find the year/week number, look for the serial number which is printed on a label on the back. For example number HQ1309DER4F means 2013,

week 09.

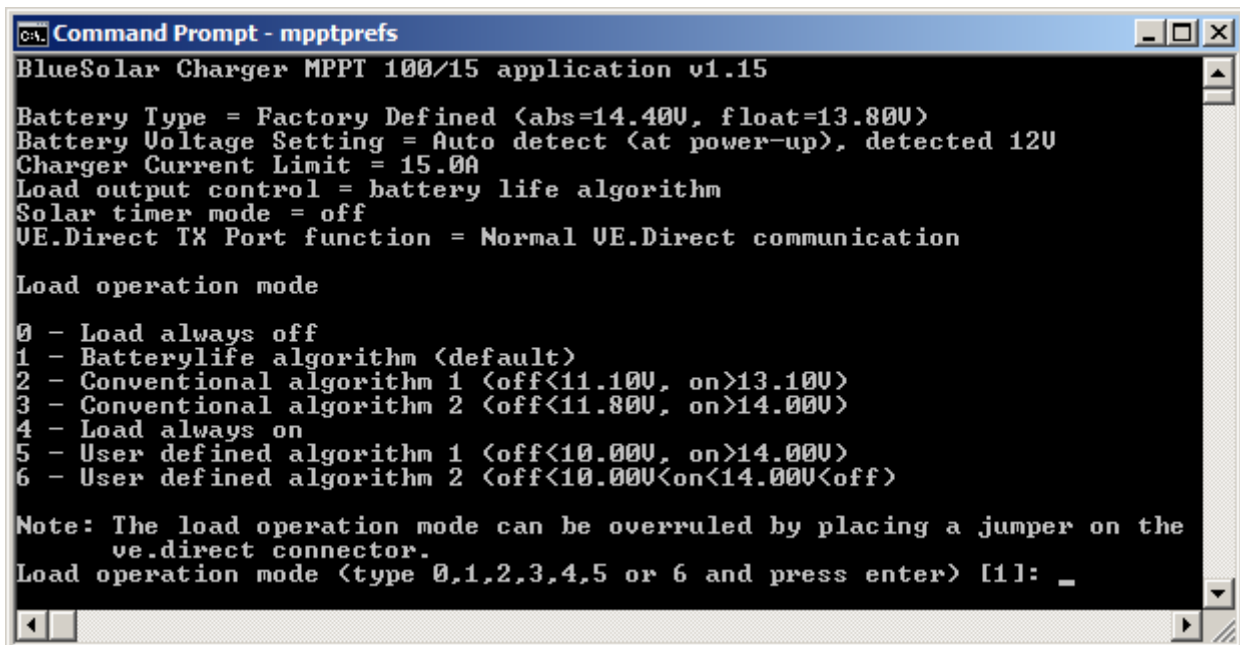
### I - Modify load output / lighting controller (timer) settings



#### m - Modify load operation mode

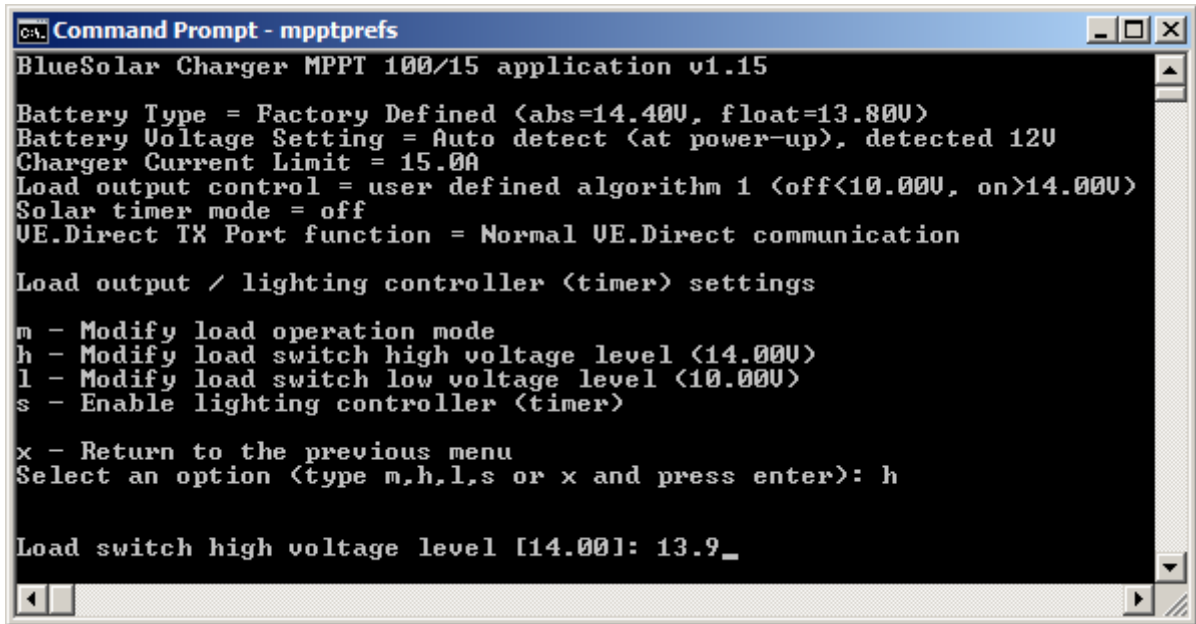
Change the load switch on/off behavior. By default the battery life algorithm will be used (option 1). Normally a jumper can be used to select between two fixed switch on/off set-points. However if you require communication with the charger (e.g. when connecting a Color Control) you can use options 2 or 3 to preset a conventional algorithm. Options 5 and 6 can be used to create custom algorithms, with programmable switch on and switch off levels (see options 'h' and 'l').

Keep in mind that modes 0 (always off) and 4 (always on) will respond immediately, the other modes rely on the battery voltage and have a delay of 2 minutes before the load output will change (so the charger does not respond too quickly when for example an inrush current briefly lowers the battery below the threshold voltage).



#### h - Modify load switch high voltage level (load operation modes 5 and 6)

Enter a custom load switch voltage level (high boundary).



```
Command Prompt - mpptprefs
BlueSolar Charger MPPT 100/15 application v1.15
Battery Type = Factory Defined (abs=14.40V, float=13.80V)
Battery Voltage Setting = Auto detect (at power-up), detected 12V
Charger Current Limit = 15.0A
Load output control = user defined algorithm 1 (off<10.00V, on>14.00V)
Solar timer mode = off
VE.Direct TX Port function = Normal VE.Direct communication

Load output / lighting controller (timer) settings
m - Modify load operation mode
h - Modify load switch high voltage level (14.00V)
l - Modify load switch low voltage level (10.00V)
s - Enable lighting controller (timer)
x - Return to the previous menu
Select an option (type m,h,l,s or x and press enter): h

Load switch high voltage level [14.00]: 13.9_
```

**l** - Modify load switch low voltage level (load operation modes 5 and 6)

**s** - Enable/disable lighting controller (timer)

Switch on or off the lighting controller functionality. See option 'p' for details on how to set-up a timer program.

**p** - Modify lighting controller timer programs (when the lighting controller is enabled)

```

Command Prompt - mpptprefs
BlueSolar Charger MPPT 100/15 application v1.16
Battery Type = Factory Defined (abs=14.40V, float=13.80V, eqv=16.20V)
Battery Voltage Setting = Auto detect (at power-up), detected 12V
Charger Current Limit = 15.0A
Automatic equalisation = off
Load output control = conventional algorithm 1 (off<11.10V, on>13.10V)
Solar timer mode = on
Event 1: at sunset switch on (100%)
Event 2: 02:00 after sunset switch on (30%)
Event 3: 01:00 before sunrise switch on (100%)
Event 4: at sunrise switch off
VE.Direct TX Port function = Normal VE.Direct communication

Lighting controller timer program

sunset control actions:
a - no action
b - on for a fixed number of hours after sunset
c - on from sunset till midnight
d - on sunset till sunrise (further sunrise control actions disabled)

sunrise control actions:
e - switch off at sunrise
f - on for a fixed number of hours before sunrise

m - mid-point shift
s - setup gradual dimming (speed)
t - panel voltage tweaks (night/day detection thresholds)

x - Return to the previous menu
Note1: The charger needs to operate several days before it syncs with the solar
       activity, while unsynchronised 12-hour day and 12-hour night is assumed.
Note2: To use the dimming function the ve.direct tx port function must set to
       pwm mode (main menu option p).
Select an option (type a,b,c,d,e,f,s,t or x and press enter):

```

When the lighting controller is enabled (option 's'), a timer program can be created. The events 'sunset' and 'sunrise' are used as anchor points for the timer program. The lighting controller (timer) program is written to non-volatile memory, so the program will remain intact when the charger is disconnected from the battery.

Note that the internal clock needs a few days of uninterrupted operation to synchronize its internal clock to the sunrise and sunset, as long as the day/night cycle is unknown a 12-hour day and 12-hour night is assumed.

At sunset you can choose to use the following control actions:

**a** - Take no action (light remains off).

**b** - Switch on the light and switch off after a number of hours. When you choose this option you can enter the desired number of hours. Two dimlevels can be entered both for the "on" period and the dimlevel for the "off" period (use 0 to switch the light off during the night).

**c** - Switch on the light and switch off at midnight. Note that midnight is determined by the solar activity, the charger needs to operate for several days to synchronize with the solar activity and the actual midnight point (12 o'clock) differs from the solar midnight, based on your location and if daylight saving is used. Like option b you get the opportunity to enter two dimlevels for the "on" period till midnight and the dimlevel for the "off" period after midnight (use 0 to switch the light off during the night). When mpptprefs stores the settings it sends the local time of the PC to the MPPT charger. The charger will use this time for 5 days, this bridges the time the charger needs to synchronize with the solar activity. Note that this is only useful as long as the charger remains powered-on, otherwise the assumption will be made that midnight occurs 6-hours after sunset as long



as the internal clock is not synchronised.

**d** - Switch on the light and switch off at sunrise. Note when this option is chosen the sunrise control actions are no longer shown.

At sunrise you can choose to:

**e** - Switch off at sunrise

**f** - Switch on the light several hours before sunrise and switch off the light at sunrise. Note that the charger needs to synchronize with the solar activity in order to predict the sunrise moment, this takes several days.

When entering a switch on action a dim level can be entered, this results in a PWM signal on the TX port when the VE.Direct port is set into this mode (option p in the main menu).

**m** - Mid-point shift. The midnight point is estimated based on the solar activity, due to your geographical position and day-light saving this will deviate from the actual midnight. With the midpoint shift this can be compensated partially. Note that this setting is only relevant when your timer program uses midnight as a switching moment (like option c does). Use 0 to disable the shift (default).

Calculation example: sunset 19:00 (=1140 min), sunrise 6:25 (=385 min)

- night duration = midnight-sunset+sunrise = 1440-1140+385 = 685 minutes
- shift = sunset+night\_duration/2-midnight = 1140+342-1440 = 42 minutes

**s** - Setup gradual dimming (speed). The gradual dimming option can be used to slow down the response of the timer program. This is useful when multiple chargers are used in a row, to mask the effect that each timer uses its own detection and the transitions moments will vary from unit to unit.

Settings (1% change per x seconds):

- 0 = immediate response (gradual dimming disabled)
- 9 = dim from 0 to 100% in 15 minutes

Available from firmware 1.16 and higher.

**t** - Panel voltage tweaks (night/day detection thresholds). Night/day detection voltage tweaks can be used to adjust the detection to match the panel configuration. The day detection voltage must be 0.5V higher than the night detection level. The lowest detectable voltage is 11.4V. Set this option to 0 to use the built-in defaults (night:  $V_{panel} < 11.4V$ , day:  $V_{panel} > 11.9V$ ).

Available from firmware 1.16 and higher.

## Other settings

**e** - Clear history data

Erase the historical data (daily logs and statistics). This data is available on the ve.direct output. A Color Control can be used to view this data.

**p** - VE.Direct TX Port function

The function of the TX pin on the VE.Direct connector can be used for other functions. Available options:

**0** - Normal VE.Direct communication.

**1** - Emit a pulse every 0.01kWh, the TX port is normally high and will be driven low for approx. 250ms for every 0.01kWh harvested.

**2** - In combination with the lighting controller (solar timer), the light can be dimmed using a normal PWM signal from the TX port.

**3** - In combination with the lighting controller (solar timer), the light can be dimmed using an inverted PWM signal from the TX port.

**4** - Virtual load output. This enables the Streetlight functionality on the larger MPPT models. The load output can be realized via the VE.Direct connector by using cable ASS030550500. Connect the cable to a battery protect module or a solid state relay.

Notes: the PWM output (when using options 2 and 3) operates at a fixed frequency of 160Hz and has a fixed voltage level of 5V.

```

Command Prompt - mpptprefs.exe
BlueSolar Charger MPPT 100/15 application v1.17
Battery Type = Factory Defined (abs=14.40V, float=13.80V, eqv=16.20V)
Battery Voltage Setting = Auto detect (at power-up), detected 12V
Charger Current Limit = 15.0A
Automatic equalisation = off
Load output control = battery life algorithm
VE.Direct TX Port function = Normal VE.Direct communication
VE.Direct RX Port function = Load output configuration

VE.Direct TX Port function
0 - Normal VE.Direct communication (default)
1 - Pulse every 0.01kWh
2 - Light dimming control (pwm normal)
3 - Light dimming control (pwm inverted)
4 - Virtual load output

TX Port function (type 0,1,2,3,4 and press enter) [0]:

```

**q** - VE.Direct RX Port function

The function of the RX pin on the VE.Direct connector can be used for other functions. This functionality is introduced in firmware version 1.17 and applies to the 10A and 15A chargers with a load output. Available options:

**0** - Remote on/off. Allows remote charger on/off control (0V = switch charger off, +5V or VE.Direct communication = switch charger on), e.g. to connect to a VE.BUS BMS (using cable ASS030550300).

**1** - Load output configuration (default behavior).

**2** - Load output on/off. Allows remote control of the load output (0V = switch load on, +5V or VE.Direct communication = switch load off).

```

Command Prompt - mpptprefs.exe
BlueSolar Charger MPPT 100/15 application v1.17
Battery Type = Factory Defined (abs=14.40V, float=13.80V, eqv=16.20V)
Battery Voltage Setting = Auto detect (at power-up), detected 12V
Charger Current Limit = 15.0A
Automatic equalisation = off
Load output control = battery life algorithm
UE.Direct TX Port function = Normal UE.Direct communication
UE.Direct RX Port function = Load output configuration
UE.Direct RX Port function
0 - Remote on/off
1 - Load output configuration (default)
2 - Load output on/off
TX Port function (type 0,1,2 and press enter) [1]: 1

```

## Batch mode

- When a large number of chargers must be (re)programmed, it might be useful to use the tool in batch mode. Start the Command Prompt (cmd.exe) and navigate to the directory containing the mpptprefs.exe.
- Issue the following command:

```
mpptprefs.exe -s COMx -a ABS
```

Make sure to replace COMx with the correct serial port, replace ABS with the desired absorption voltage e.g. 14.8

The output should look like the screenshot below.

```

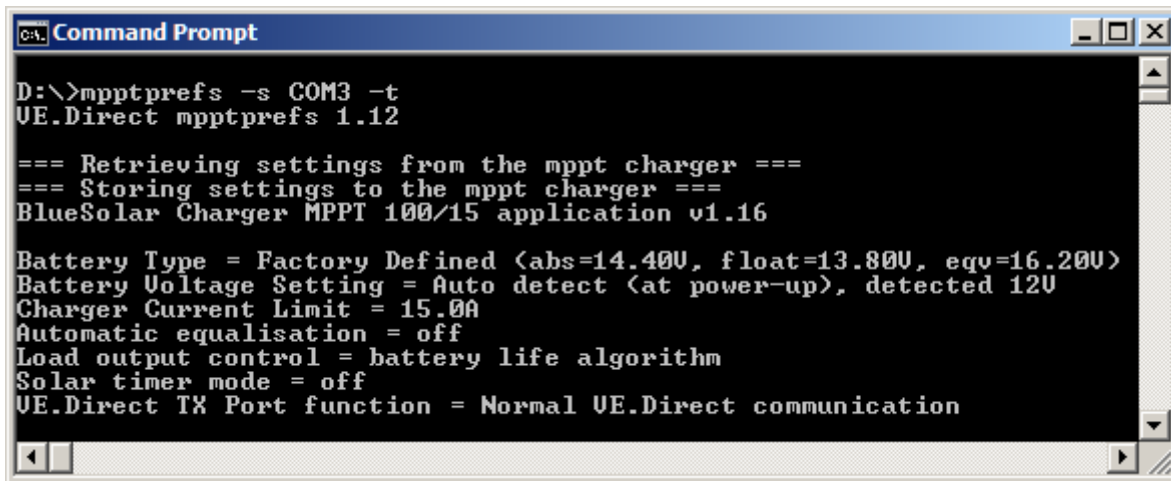
Command Prompt
D:\>mpptprefs -s COM3 -a 14.8
UE.Direct mpptprefs 1.12
=== Retrieving settings from the mppt charger ===
=== Storing settings to the mppt charger ===
BlueSolar Charger MPPT 100/15 application v1.16
Battery Type = User Defined
Battery Voltage Setting = Auto detect (at power-up), detected 12V
Battery Absorption Voltage = 14.80V
Battery Float Voltage = 13.80V
Battery Equalisation Voltage = 16.20V
Charger Current Limit = 15.0A
Automatic equalisation = off
Load output control = battery life algorithm
Solar timer mode = off
UE.Direct TX Port function = Normal UE.Direct communication

```

- In order to restore factory defined charge algorithm behaviour, issue the following command:

```
mpptprefs.exe -s COMx -t
```

This will reset the battery table to factory default algorithm.



- Use the following command to get a list of supported commands:

```
mpptprefs.exe -h
```

```
VE.Direct mpptprefs 1.15
Allowed options:
-d [ --dump ]           dump communication to output
-h [ --help ]          produce help message
-g [ --get ]           retrieve data, do not change anything
-s [ --serial ] arg    serial port
-y [ --sys ] arg       set battery voltage
-a [ --abs ] arg       set absorption voltage
-f [ --float ] arg     set float voltage
-b [ --batterysafe ] arg set batterysafe mode
-c [ --current ] arg   set charger current limit
-i [ --eqv ] arg       set equalisation voltage
-j [ --autoeq ] arg    set auto equalise mode
-k [ --tempcomp ] arg  set temperature compensation
-m [ --abslim ] arg    set absorption time limit
-t [ --table ]         use factory defined battery table
-r [ --reset ]         reset all settings to factory default settings
-e [ --erase ]         clear history data
-n [ --clock ]         sync clock
-o [ --download ] arg  download settings from device to file
-u [ --upload ] arg    upload settings from file to device
-q [ --quiet ]         do not ping for devices on the bus
-V [ --version ]       version
```

Note that commands -a, -f, -b, -c, -i, -j, -k and -m can be combined to change multiple settings at once:

```
mpptprefs -s COMx -a 14.8 -f 13.7 -c 10
```

The above will change the absorption voltage to 14.8V, the float voltage to 13.7V and the sets the maximum charge current to 10A.

Use the following sequence for transferring settings to multiple units. This might be useful when the streetlight timer program needs to be distributed to a larger number of units.

```
mpptprefs -s COMx -o settings.xml
```

The above command outputs the entire configuration of a charger into a file.

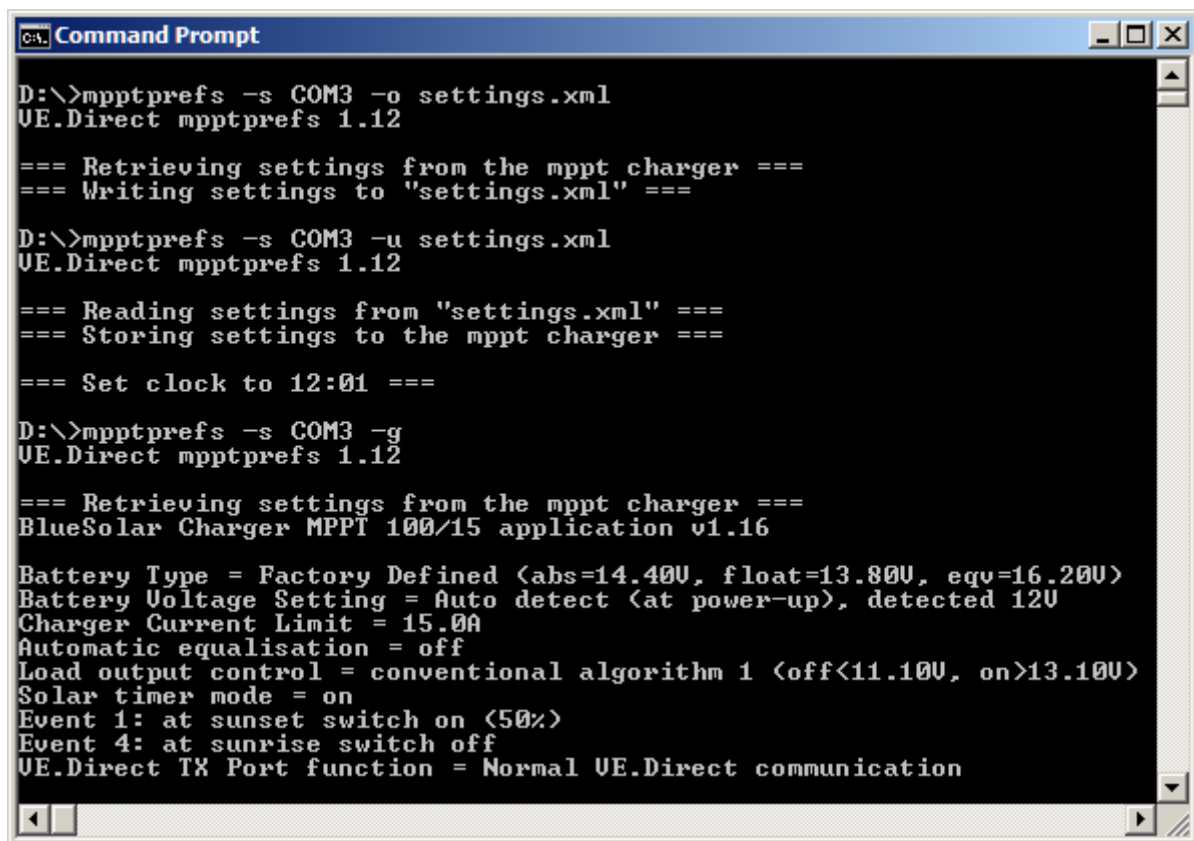
```
mpptprefs -s COMx -u settings.xml
```

The above command uploads the settings from a file to a charger. This step can be repeated as often as needed.

```
mpptprefs -s COMx -g
```

The above command gets the charger configuration and dumps it the screen. This step can be used to verify if a charger contains the proper configuration settings.

The screenshot below shows the output of a settings transfer sequence.



```
Command Prompt
D:\>mpptprefs -s COM3 -o settings.xml
UE.Direct mpptprefs 1.12

=== Retrieving settings from the mppt charger ===
=== Writing settings to "settings.xml" ===

D:\>mpptprefs -s COM3 -u settings.xml
UE.Direct mpptprefs 1.12

=== Reading settings from "settings.xml" ===
=== Storing settings to the mppt charger ===

=== Set clock to 12:01 ===

D:\>mpptprefs -s COM3 -g
UE.Direct mpptprefs 1.12

=== Retrieving settings from the mppt charger ===
BlueSolar Charger MPPT 100/15 application v1.16

Battery Type = Factory Defined (abs=14.40V, float=13.80V, eqv=16.20V)
Battery Voltage Setting = Auto detect (at power-up), detected 12V
Charger Current Limit = 15.0A
Automatic equalisation = off
Load output control = conventional algorithm 1 (off<11.10V, on>13.10V)
Solar timer mode = on
Event 1: at sunset switch on (50%)
Event 4: at sunrise switch off
UE.Direct TX Port function = Normal UE.Direct communication
```

The options -r (reset all settings to factory default) and -e (clear history data) cannot be combined with other options that modify settings, use multiple commands sequentially if one or more of these options are needed:

```
mpptprefs -s COMx -r
```

```
mpptprefs -s COMx -e
```

The above sequential commands, resets the charger to factory default settings and clears the history data.

[View the discussion thread.](#)

From:  
<https://www.victronenergy.com/live/> - **Victron Energy**

Permanent link:  
<https://www.victronenergy.com/live/ve.direct:mpptprefs>

Last update: **2016-09-07 15:08**

